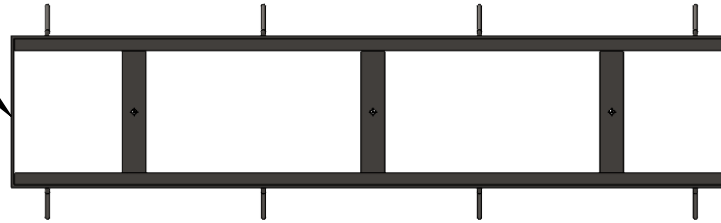


**Curb Inlet System:**

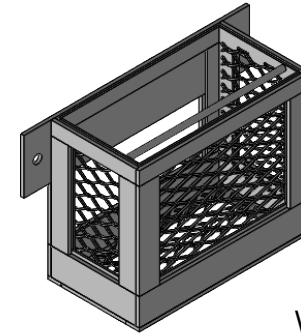


Curb Inlet Casting

This End Closed

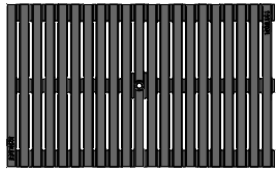


Curb Inlet E-Frame

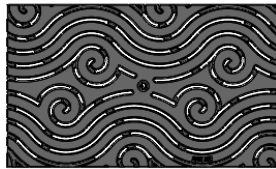


Curb Inlet Waste Basket (Optional)

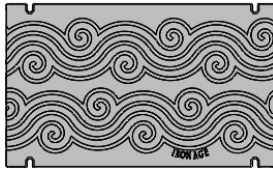
**Section A: Grate Design (Select One)**



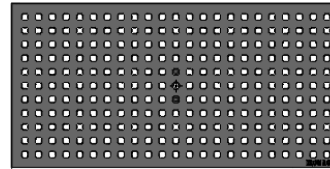
Regular Joe HPHD 12x20



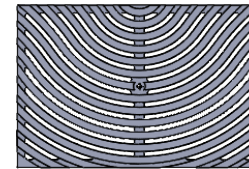
Argo HP 12x20



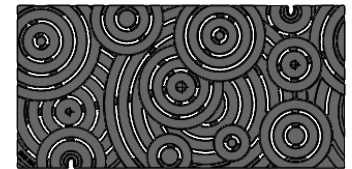
Argo Solid HP 12x20



Grid 12x24



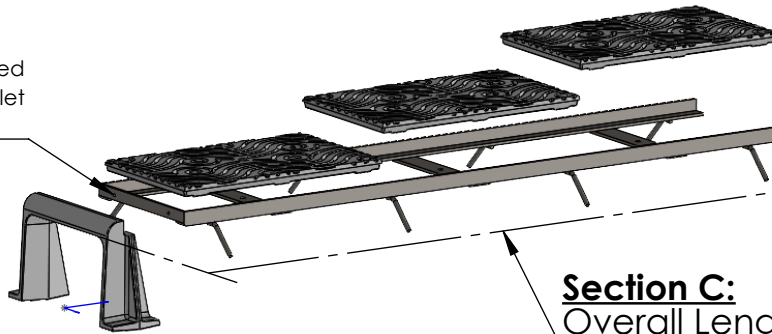
Ground Swell 12x18



Oblio HP 12x24

**Section B: End Condition (Select One)**

Frame Fastened to the Curb Inlet Casting (2x)



No End Condition This End (Standard)

Second Curb Inlet "Book End" (Optional)

Waste Basket (Optional)

**Section C:**  
Overall Length:    Feet    Inches

**NOTES:**

1. Select Grate Design from **Section A**.
2. Specify Desired End Condition from **Section B**.
3. Provide Overall Length in **Section C**.

Made in USA    ©2019 Iron Age Designs

**12" Curb Inlet System - Worksheet**

<p><b>IRON AGE DESIGNS</b> Telephone 206.276.0925 www.ironagegrates.com</p>	<b>Material:</b> Mild Steel/Ductile Iron	<b>Weight:</b> N/A lbs.	<b>Free Drain Area:</b> N/A in/sq., or N/A %	<b>By:</b> MS <b>Checked:</b> MS <b>Date:</b> 4-16-24
	<b>Finish:</b> Raw	<b>Edge:</b> 1.000" Grate Edge	<b>Flow Rate:</b> N/A GPM, or N/A CuFt./sec.	<b>© Registration:</b> Pending <b>Scale:</b> NTS
	<b>Fits:</b> 12" Curb Embedments	<b>Product ID:</b> N/A	<b>Drawing Name:</b> 01_12"_CurbInlet_System_Default	Page 1