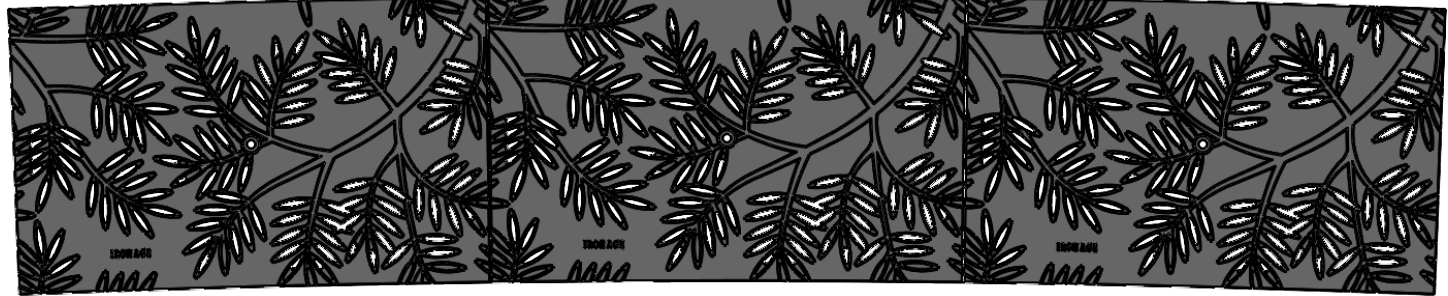
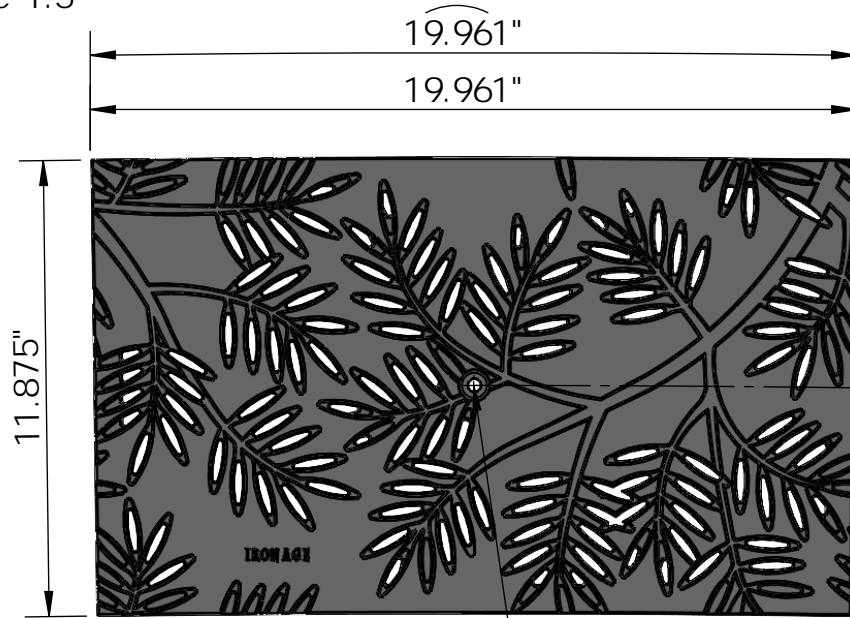


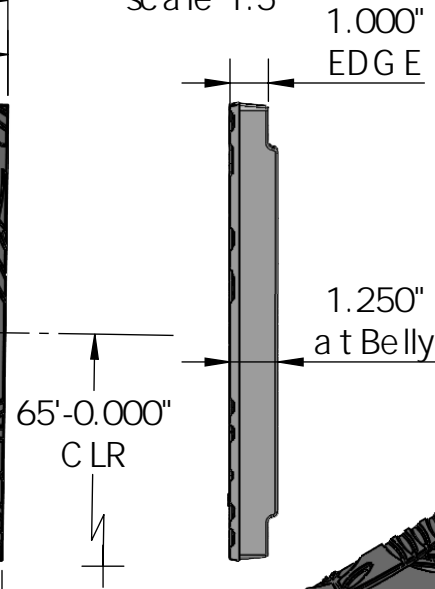
3 ARRAY
scale 1:8



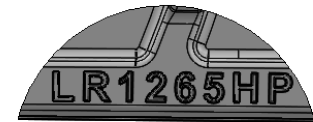
TOP VIEW
scale 1:5



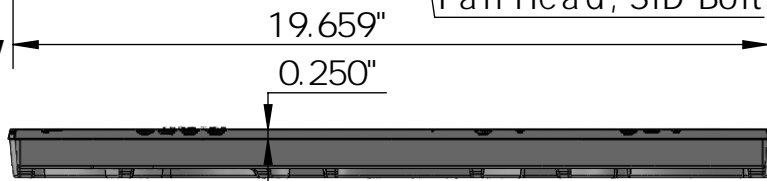
END VIEW
scale 1:5



CASTING-ID
scale 1:2



SIDE VIEW
scale 1:5



ISO-VIEW
scale 1:7

Locust 12' x 20' Trench Grate - Heel Proof
65'-0' C.L.R.

NOTES:

1. Heelproof: No thru openings greater than 1/4".
2. Ships in pieces: 1
3. Due to casting inconsistencies, all dimensions are nominal.

Made in USA © 2024 Iron Age Designs

IRON AGE
DESIGNS
Telephone 206.276.0925
www.ironagegrates.com

Material: Ductile Iron 65-45-12	Weight: 33.50lbs.	Free Drain Area: 20.23 in/sq., or 8.60 %	By: MS	Checked: MS	Date: 9-4-24
Finish: Raw	Edge: 1.00'	Flow Rate: 26.50 GPM, or .059 CuFt./sec.	© Registration: Pending Scale: NTS		
Fits Iron Age Custom Frames SOLD SEPARATELY	Product ID: LR1265I99HP	Drawing Name: 01_Loc_I_12x65CLR_HP_TrenchGrate_Iron			