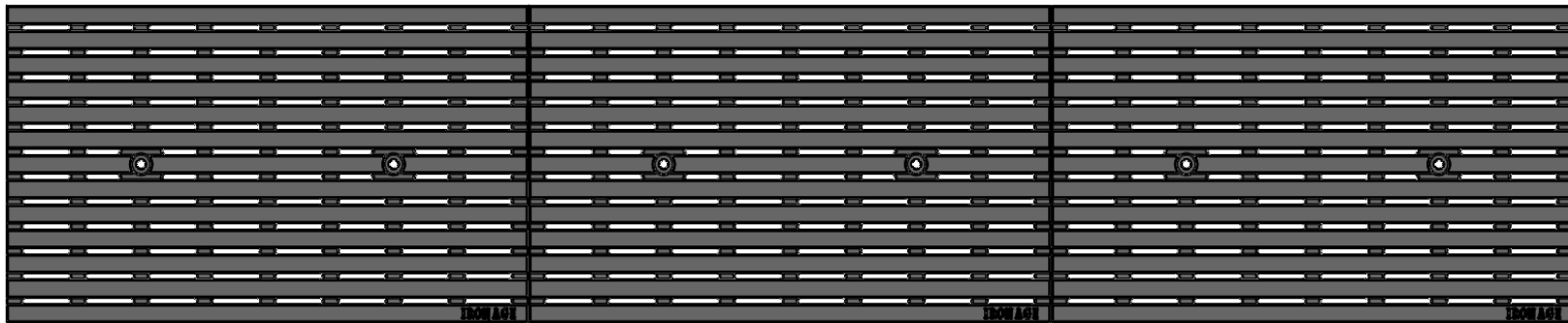
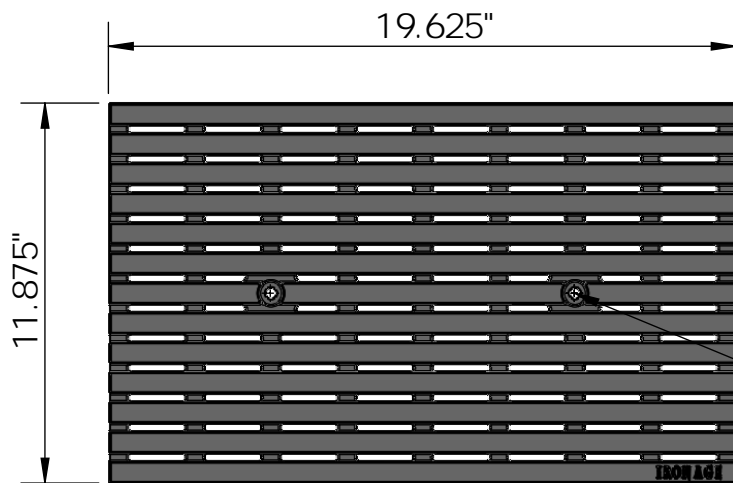


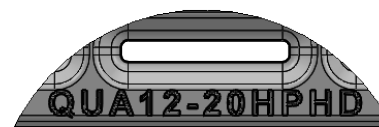
3 ARRAY
scale 1:7



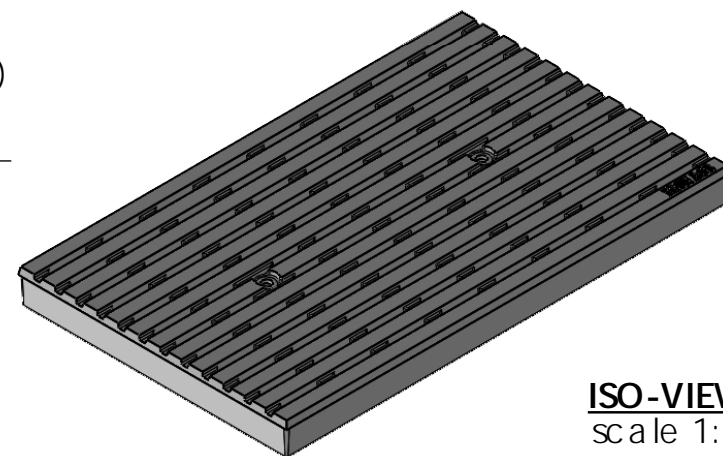
TOP VIEW
scale 1:6



CASTING-ID
scale 1:2

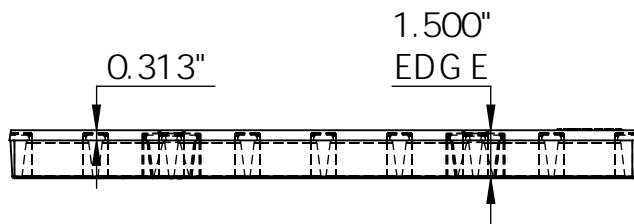


1/4"-20 (2x)
Pan Head
STD-Bolt



ISO-VIEW
scale 1:6

SIDE VIEW
scale 1:6




NOTES:

1. Heelproof: No thru openings greater than 1/4".
2. Ships in pieces: 1
3. Due to casting inconsistencies, all dimensions are nominal.

Made in USA © 2024 Iron Age Designs

Que 12' x 20' Trench Grate, Heelproof - Heavy Duty

 IRON AGE DESIGNS Telephone 206.276.0925 www.ironagegrates.com	Material: Cast Almag 535	Weight: 19.54lbs.	Free Drain Area: 35.66 in/sq., or 15.30 %	By: MS Checked: MS Date: 9-11-24
	Finish: Clear Anodized	Edge: 1.500"	Flow Rate: 46.71 GPM, or .104 CuFt./sec.	© Registration: Pending Scale: NTS
	Fits Iron Age Custom Frames SOLD SEPARATELY	Product ID: QUA12-20AM99HPHD	Drawing Name: 01_Que_A_12x20HPHD_TrenchGrate_Almag535	