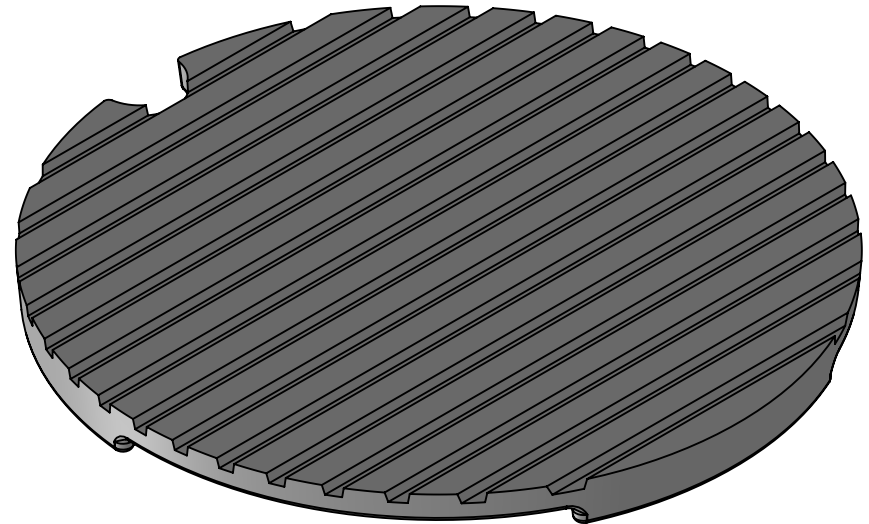
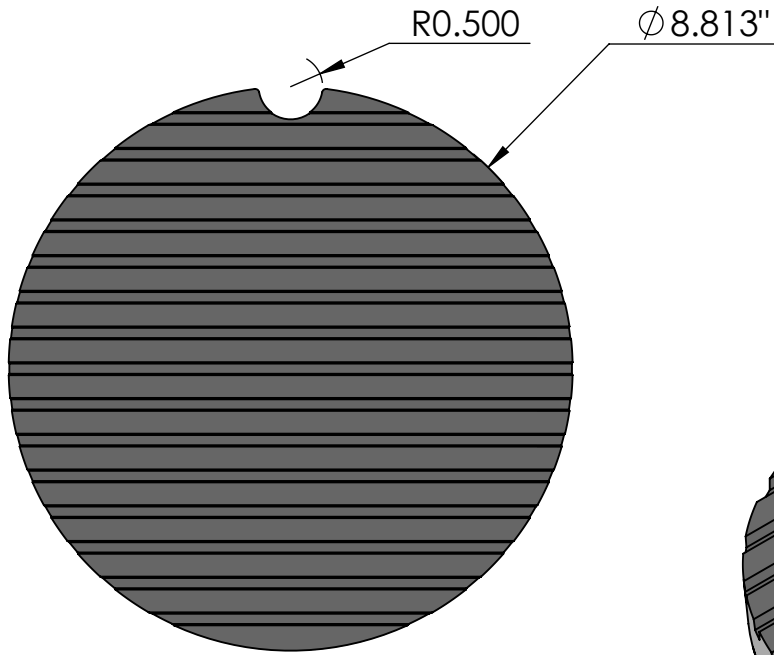
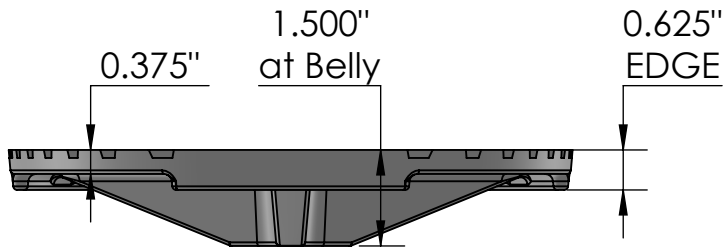


**TOP VIEW**  
scale 1:3



**SIDE VIEW**  
scale 1:3




**ISO-VIEW**  
scale 1:2

**NOTES:**

1. ADA Compliant: SOLID.
2. Ships in pieces: 1
3. Due to casting inconsistencies, all dimensions are nominal.

Made in USA ©2015 Iron Age Designs

**Regular Joe 9" Dia Catch Basin Solid**

 <b>IRON AGE DESIGNS</b> Telephone 206.276.0925 www.ironagegrates.com	<b>Material:</b> Cast Iron A 48	<b>Weight:</b> 6.67 lbs.	<b>Free Drain Area:</b> N/A in/sq., or N/A %	<b>By:</b> MS <b>Checked:</b> MS <b>Date:</b> 5-24-22
	<b>Finish:</b> Raw	<b>Edge:</b> 0.625"	<b>Flow Rate:</b> N/A GPM, or N/A CuFt./sec.	<b>© Registration:</b> Pending <b>Scale:</b> NTS
	<b>Fits:</b> EJIW 3675A2 Catch Basin	<b>Product ID:</b> RJE9dia150S	<b>Drawing Name:</b> 01_RJoe_E_9Dia_CatchBasinSolid_D	