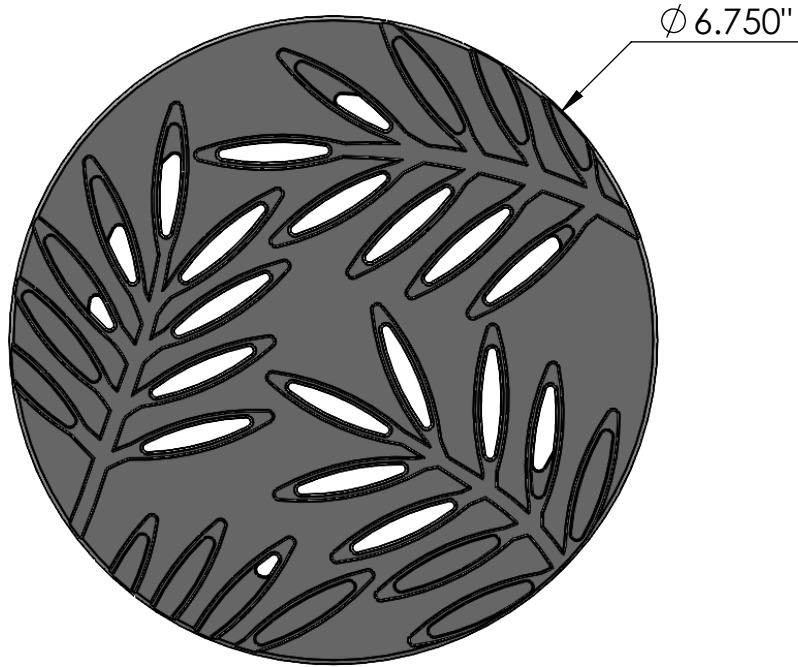
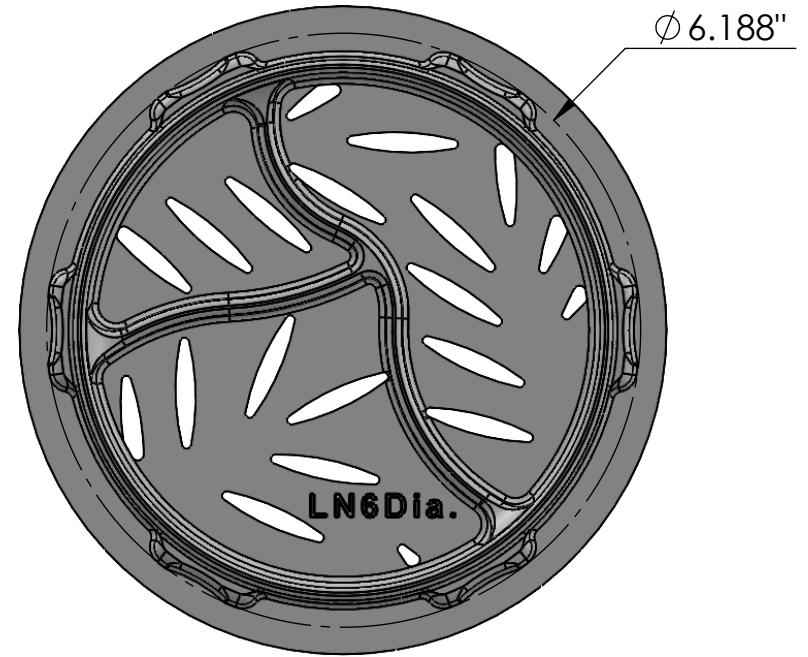


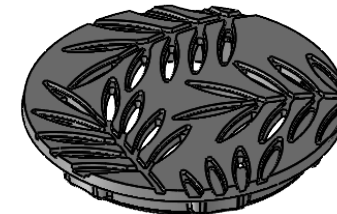
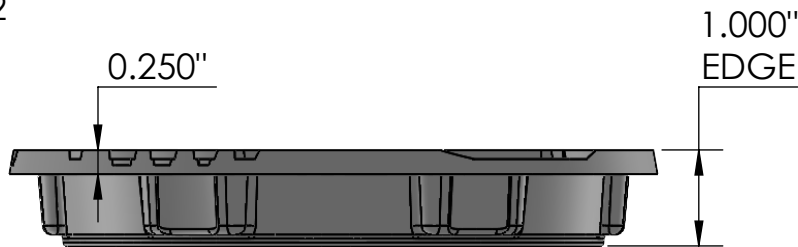
TOP VIEW
scale 1:2



BOTTOM VIEW
scale 1:3



SIDE VIEW
scale 1:2




ISO-VIEW
scale 1:4

NOTES:

1. Heelproof: No thru openings greater than ¼".
2. Ships in pieces: 1
3. Due to casting inconsistencies, all dimensions are nominal.

Made in USA ©2015 Iron Age Designs

Locust 6" Dia. Catch Basin Grate - Heel Proof

 IRON AGE DESIGNS Telephone 206.276.0925 www.ironagegrates.com	Material: Ductile Iron 65-45-12	Weight: 3.00 lbs.	Free Drain Area: 3.16 in/sq., or 8.85 %	By: MS Checked: MS Date: 5-14-24
	Finish: Raw	Edge: 1.000"	Flow Rate: 4.14 GPM, or .009 CuFt./sec.	© Registration: VA 1-970-711 Scale: NTS
	Fits: NDS® Spee-D® Basin System By Other	Product ID: LN6Dia I06HP	Drawing Name: 02_LOC_6Dia_CatchBasinGrate_Iron	