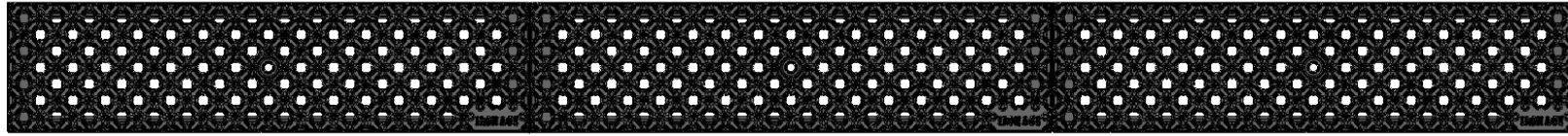
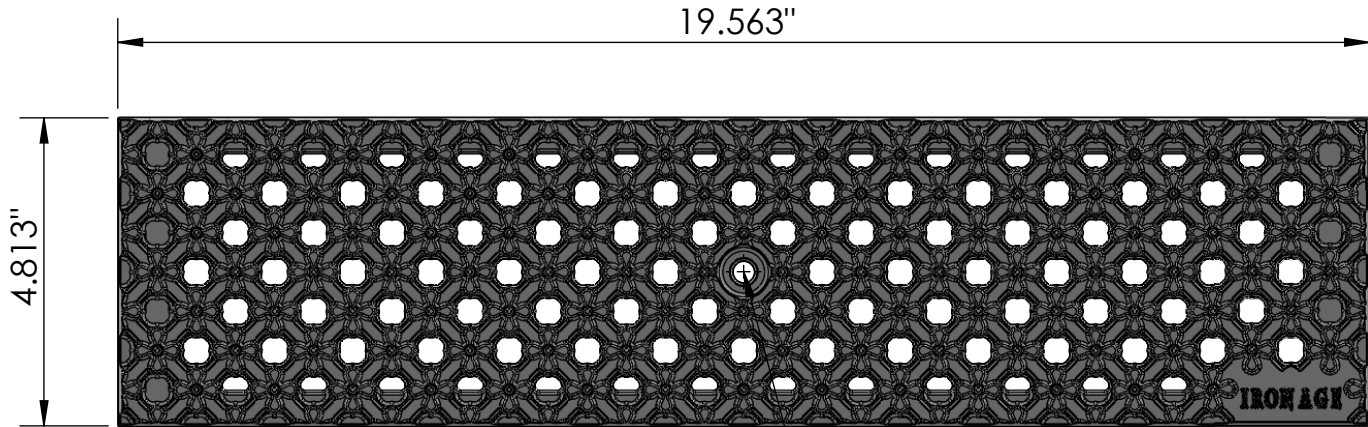


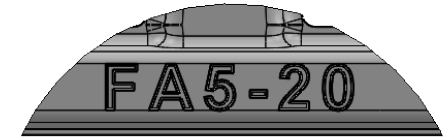
**3 ARRAY**  
scale 1:7



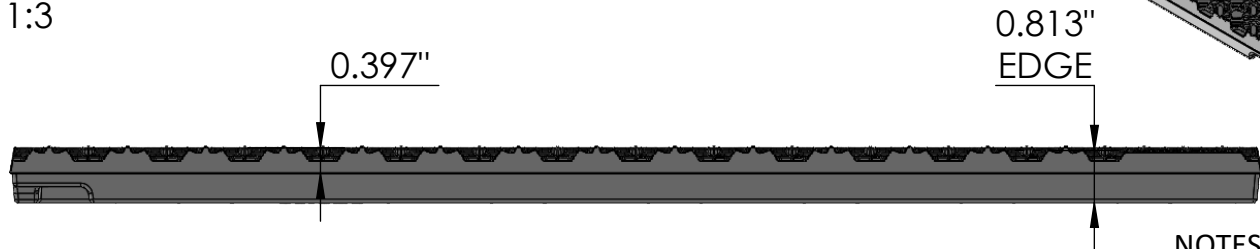
**TOP VIEW**  
scale 1:3



**CASTING-ID**  
scale 1:1



**SIDE VIEW**  
scale 1:3



5/16"-18  
Pan Head  
STD-Bolt




**ISO-VIEW**  
scale 1:5

**NOTES:**

1. ADA Compliant: No thru openings greater than 1/2".
2. Ships in pieces: 1
3. Due to casting inconsistencies, all dimensions are nominal.

Made in USA ©2023 Iron Age Designs

**Flower Grid 5" x 20" Trench Grate**

|  |   |                                 |   |   |
|--|---|---------------------------------|---|---|
|  <b>IRON AGE<br/>DESIGNS</b><br>Telephone 206.276.0925<br>www.ironagegrates.com | <b>Material:</b> Ductile Iron 65-45-12                  | <b>Weight:</b> 12.00 lbs.       | <b>Free Drain Area:</b> 12.90 in./sq., or 13.71 %     | <b>By:</b> MS <b>Checked:</b> MS <b>Date:</b> 5-16-24 |
|  | <b>Finish:</b> Raw                                      | <b>Edge:</b> 0.813"             | <b>Flow Rate:</b> 16.90 GPM, or .037 CuFt./sec.       | <b>© Registration:</b> Pending <b>Scale:</b> NTS      |
|  | <b>Fits:</b> ABT® PolyDrain® ACO™<br>K100, K100S, KS100 | <b>Product ID:</b><br>FA5-20I21 | <b>Drawing Name:</b> 02_FlowerGrid_A_5x20_TrenchGrate |   |